

Host Surveillance

Dave Hodson, Petr Kosina

Germplasm

- Variety area updates (major cultivars) 18 countries
 - ▶ Armenia, Azerbaijan, Bangladesh, Burundi, China, Ecuador, Ethiopia, Georgia, India, Iran, Kazakhstan, Kenya, Kyrgyzstan, Nepal, Pakistan, Tajikistan, Turkey, Turkmenistan
- Data from additional countries – PLEASE HELP!
- Screening data + linkages to germplasm
- Host R genes – starting to move

CIMMYT Wheat Atlas

Wheat Atlas
International Maize and Wheat Improvement Center

Home Why Wheat? Mega-Environments Ug99 Charts Wheat Trade GIS Tools Resources About

Search by country Search by topic Select Language

Select a Country...

Wheat Atlas
An online portal to diverse information on wheat production, markets and research, with particular focus on the developing countries. The information is geographically organized, and can be visualized using maps and charts.

Useful Resources
CIMMYT
Wheat Doctor
Wheat Initiative
Borlaug Global Rust Initiative
Rust Tracker
Wheat.org
Wheat Pedigree (GRIS)

Wheat Science News
New research targets wheat production models and climate change - Jul 31 2013
Advance in battle against wheat pest (BBC News) - Jun 20 2013
Scientists developing wheat for celiac sufferers - Jun 24 2013

World Wheat News
Curated by International Maize and Wheat Improvement Center
China: 'No worry' on wheat imports
China is growing wheat imports could soon make it the world's top importer, although such a change is not expected to push global wheat prices higher.

Wheat prices (in US\$ / Ton)
Data from International Grain Council
US - HRW (July) EU - France Grade 1 (Rs)

12th IWGS The 12th International Wheat Genetic Symposium IGC 2013 GRAINS CONFERENCE BGRI 2013 Workshop 19-22 AUGUST NEW DELHI, INDIA International Symposium Genetic and Breeding of Cereals 2013-2014 CIMMYT

Norman Borlaug's 100th Birthday Celebration and Wheat Summit and BGRI 2014 Annual Meeting 19-25 March 2014 - Mexico City

Wheat Atlas by CIMMYT, Int. is licensed under a Creative Commons Attribution NonCommercial-No Derivatives 2.5 Mexico License. Permissions beyond the scope of this license may be available at <http://www.cimmyt.org>.

Wheat Varieties :: India

Variety acreage is the best estimation received from the wheat experts of each country in given year. Only includes commercially important varieties. Sort the results by clicking on the column heads links:

Country	Year	Name	Synonym	Growth Habit	Variety Type
India	2012	TL 2969	TL2969, TL-2969	No info	Triticale read more
India	2012	HPW 349	HPW-349; HPW349	Spring	Bread Wheat read more
India	2012	WH 1105	WH1105; WH-1105	Spring	Bread Wheat read more
India	2012	HC 3069	HD3059; HC-3059	Spring	Bread
India	2012	DBW 71	DBW-71; DBW71	Spring	Bread
India	2012	MP 3336	MP3336; MP-3336	Spring	Bread

Updated variety acreage estimates

Charts
Search by country: Search by topic: Select Language: [All]

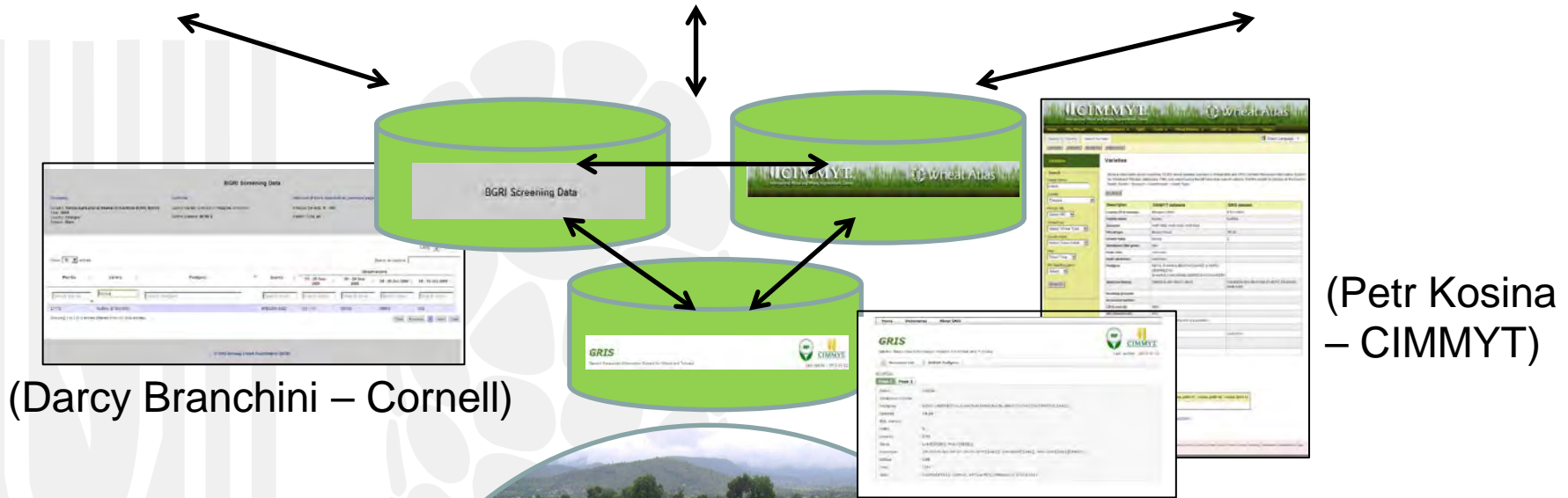
Search: [Wheat]

Wheat

New updated charting tools

Wheat Atlas by CIMMYT, Int. is licensed under a Creative Commons Attribution NonCommercial-No Derivatives 2.5 Mexico License. Permissions beyond the scope of this license may be available at <http://www.cimmyt.org>.

Integrated Host Resources

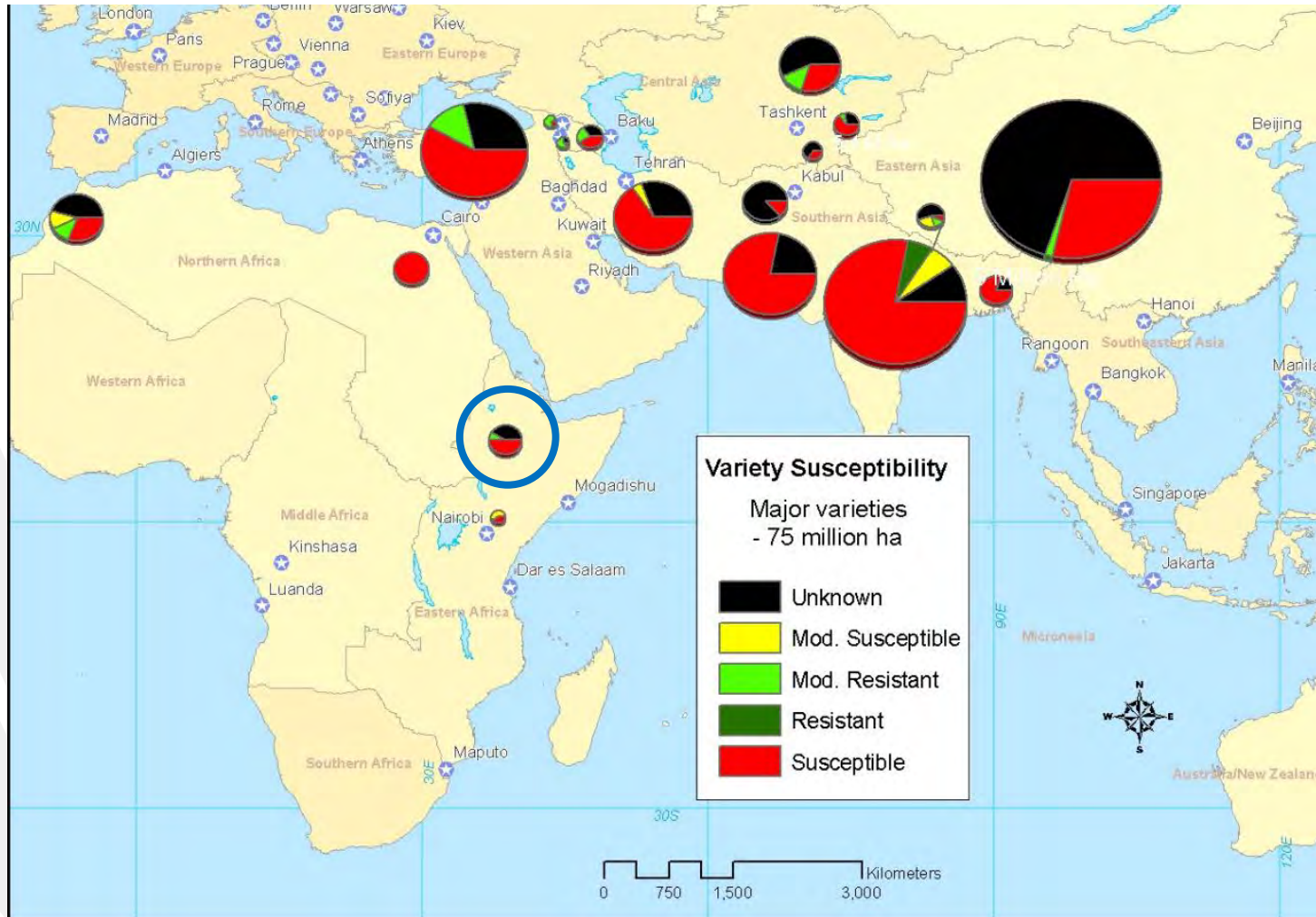


Host Databases:
GRIS
(wheatpedigree.net)
, CIMMYT Wheat Atlas, BGRI Cornell screening Dbase

Host databases:
10,000 + cultivars
200,000+ screening records

HOST

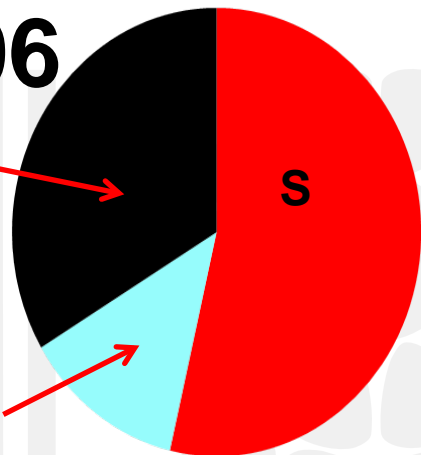
Old Ug99 Susceptibility Map - 2005



Ethiopia: Estimated Wheat Area Susceptibility to Ug99 races

2005/06

?

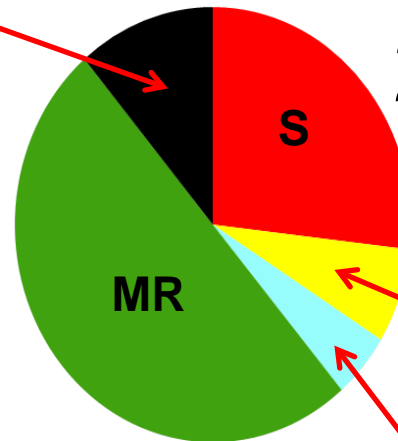


- Susceptible
- Mod R / Mod S
- Unknown

MR/MS

?

2013/14



- Susceptible
- Mod Sus
- Mod R / Mod S
- Mod Resis
- Unknown

MS

MR/MS

BGRI Screening Data

Country: Kenya, Kenya Agricultural Research Institute (KARI, SPREP)
Year: 2005
Country: Ethiopia
Season: Main

Control: Control/Variety: Unknown / Pedigree: Unknown
Infection (F0/F1): selected on previous page
Infection Severity: 0 - 100
Infection Type: all

Showing 1 to 3 of 4 entries (Sorted from 141 total entries)

Plot to	Variety	Pedigree	Source	YR	IR	SR	OR
237C	KUBSA (STWERS)		REC'S SEED	105 (F1)	2005C		100

BGRI Cornell Screening Dbase

ICIMMYT
International Maize and Wheat Improvement Center

Wheat Atlas

Home Why Wheat? Mega-Environments Ug99 Charts Wheat Markets GIS Tools Resources About

Search by country Search by topic Select Language

Varieties Stressors Nurseries Institutions

Varieties

Search
Variety Name: KUBSA
Country: Ethiopia
Primary IEC: Select IEC
Wheat Type: Select Wheat Type
Select Crown Habit
Year: Select Year
Rht dwarfing gene: Select

Varieties

Browse information about more than 10,000 wheat varieties provided by Wheat Atlas and GRIS (Genetic Resources Information System) for Wheat and Triticate) databases. Filter your search using the left hand side column options. Sort the results by clicking on the column heads (Name - Synonym - Growth Habit - Variety Type).

Go Back

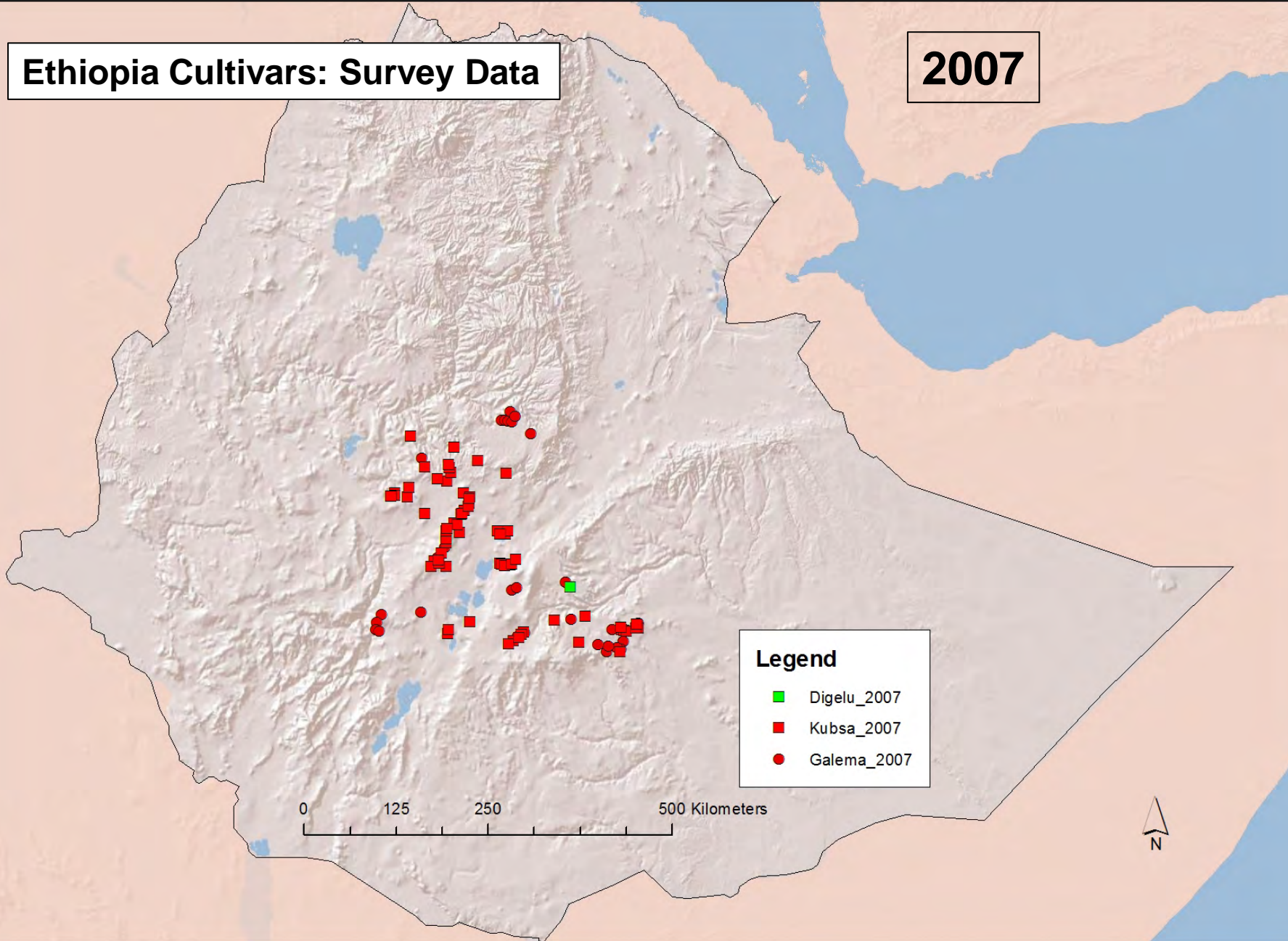
Descriptor	ICIMMYT datasets	GRIS dataset
Country (Y of release)	Ethiopia (1995)	ETH (1994)
Variety name	KUBSA	KUBSA
Synonym	HAR 1695	HAR1985
		TRAE
		S

Selection: CIM-85936-50V-0001-ETH CIM-85936

CIMMYT Wheat Atlas

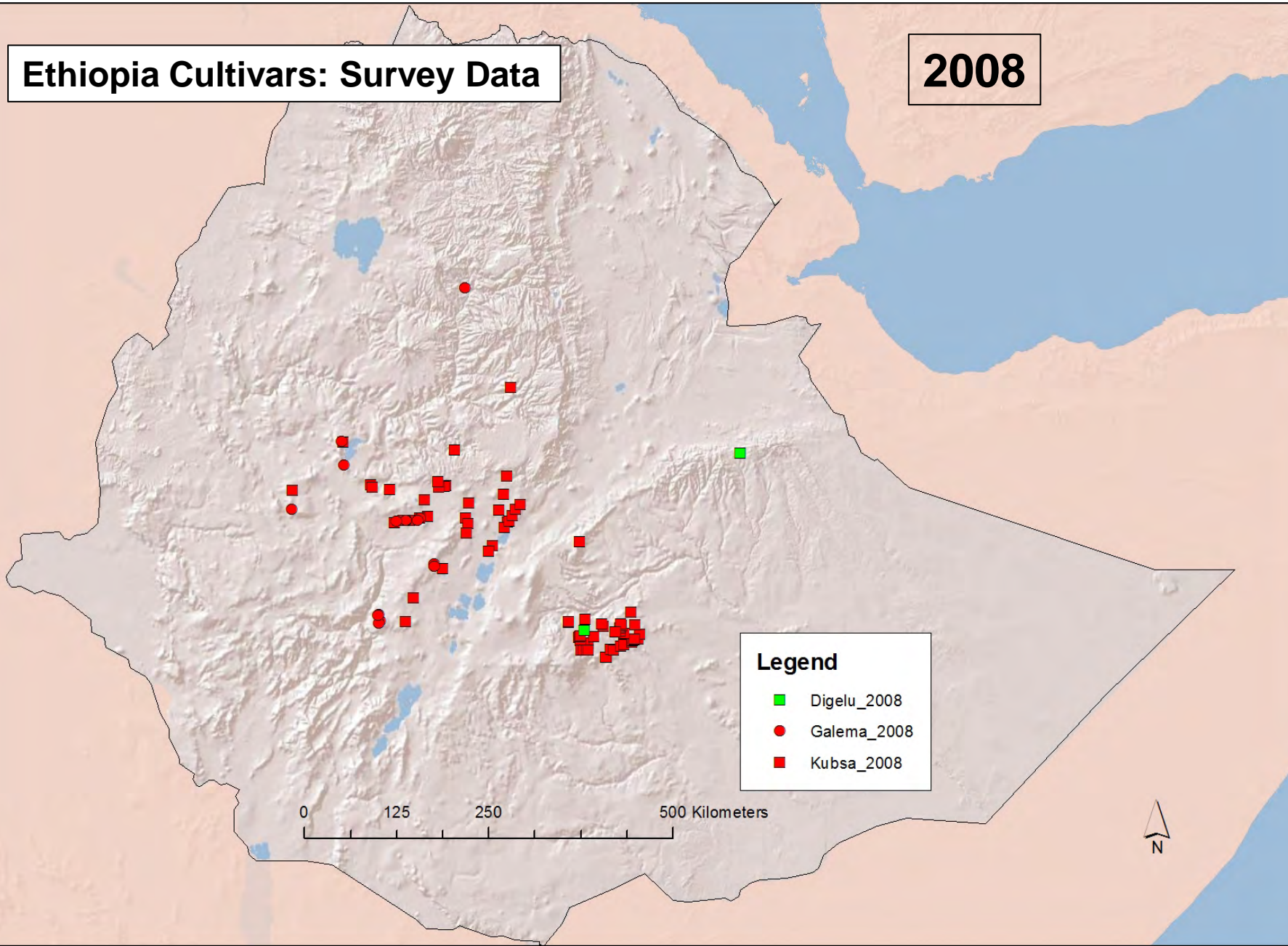
Ethiopia Cultivars: Survey Data

2007



Ethiopia Cultivars: Survey Data

2008



Legend

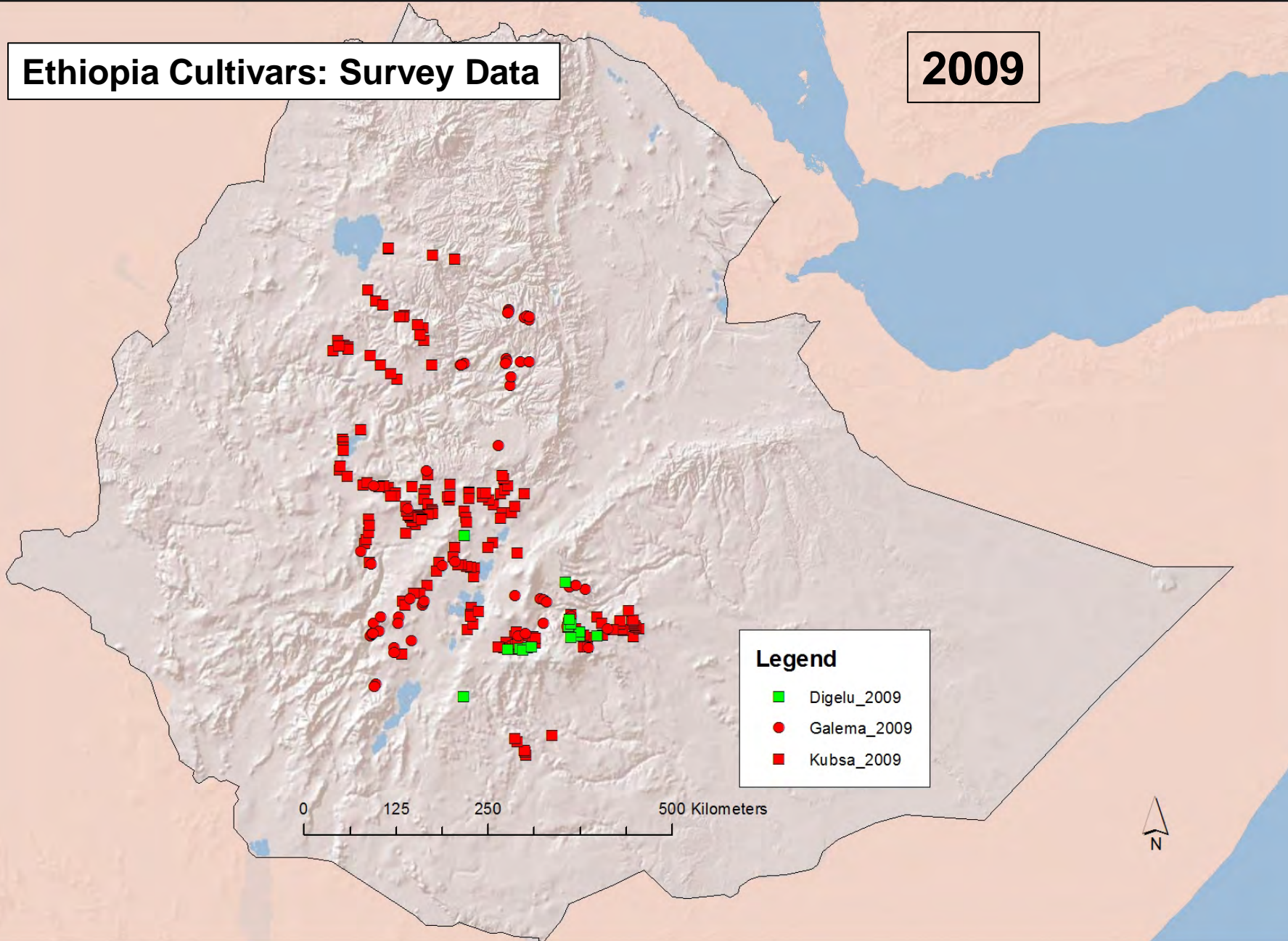
- Digelu_2008
- Galema_2008
- Kubsa_2008

0 125 250 500 Kilometers



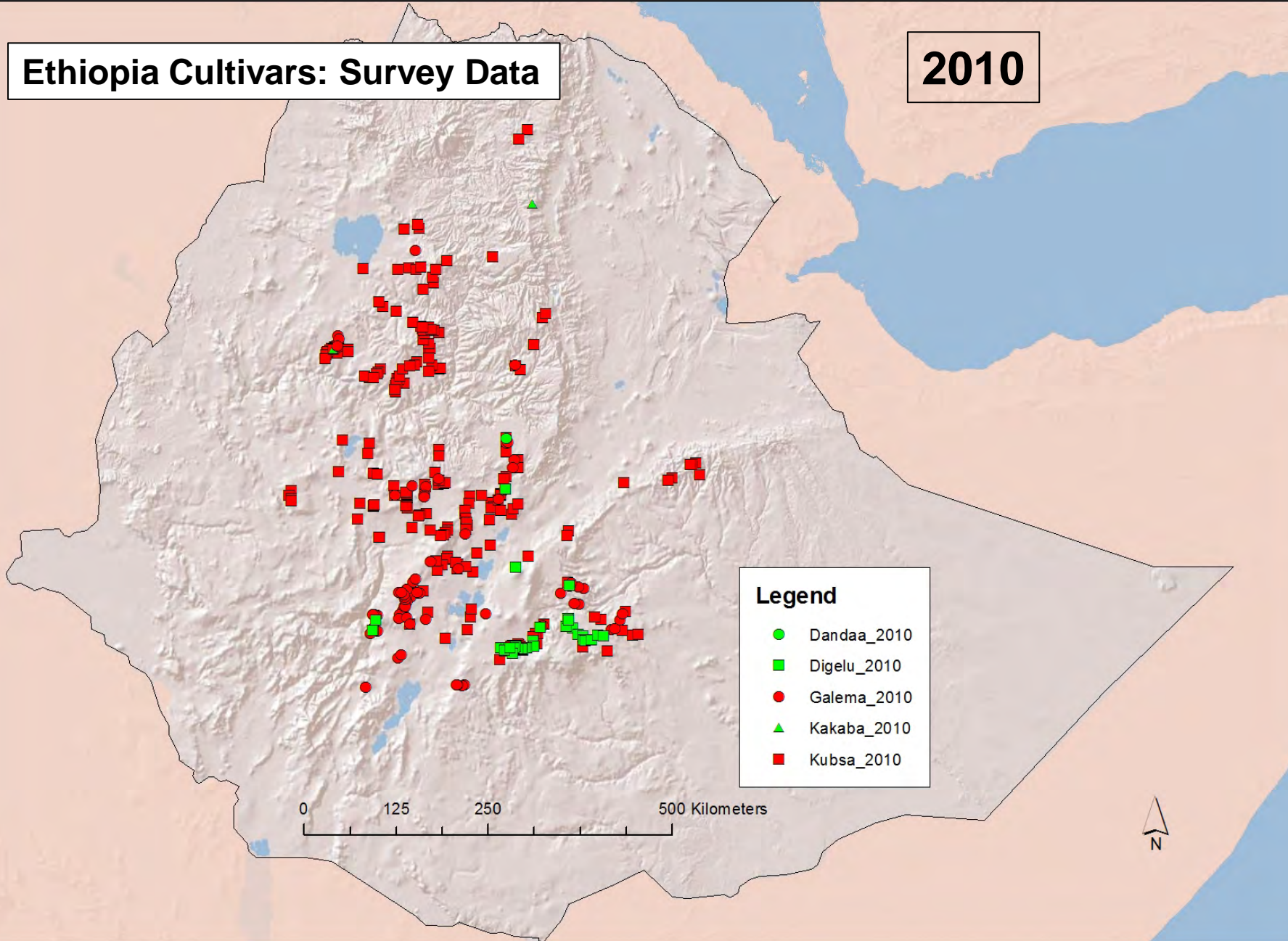
Ethiopia Cultivars: Survey Data

2009



Ethiopia Cultivars: Survey Data

2010



Legend

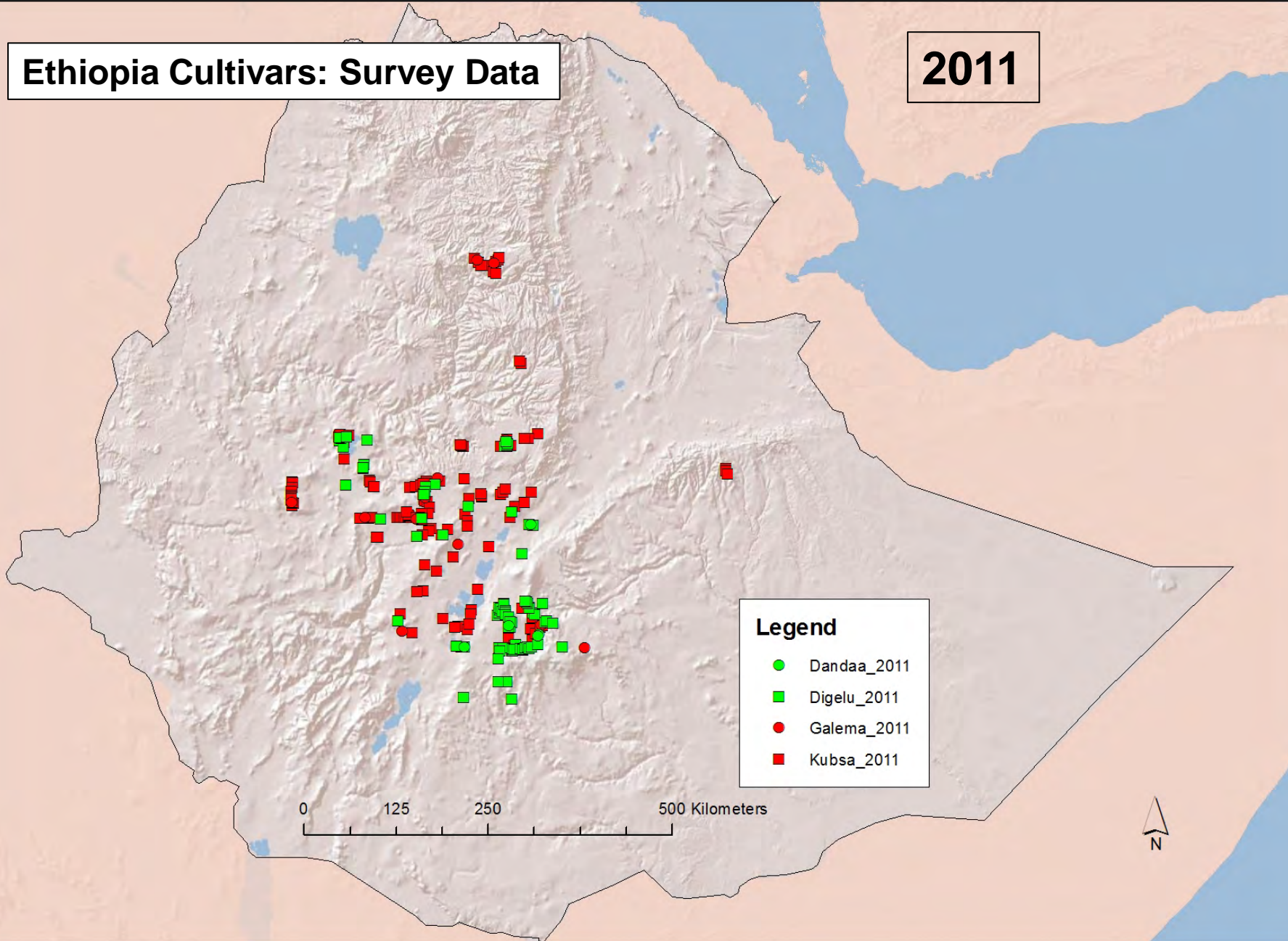
- Dandaa_2010
- Digelu_2010
- Galema_2010
- ▲ Kakaba_2010
- Kubsaa_2010

0 125 250 500 Kilometers



Ethiopia Cultivars: Survey Data

2011



Legend

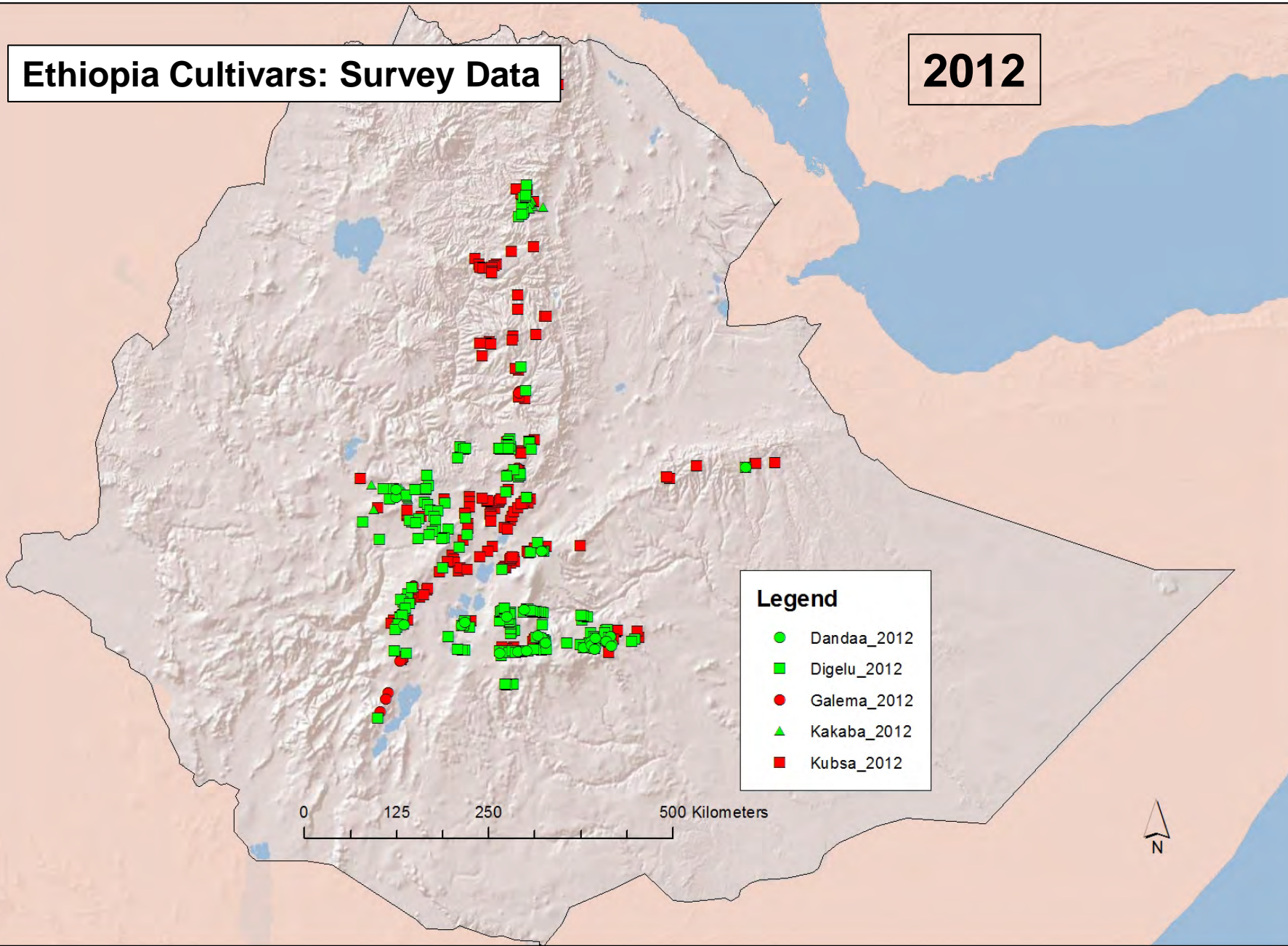
- Dandaa_2011
- Digelu_2011
- Galema_2011
- Kubsu_2011

0 125 250 500 Kilometers



Ethiopia Cultivars: Survey Data

2012



Host R Genes

- Critical Information: Some progress, but more needed
- GRIS (wheatpedigree.net) – all published references to known genes in released cultivars
- Molecular marker screening – Major cultivars in Bangladesh + Nepal (xx cultivars) [Zak Pretorius, University of Free State, South Africa]; Ethiopia – limited number of cultivars [Mike Pumphrey, Washington State Uni, USA]
- Under consideration - MM screen of all / most material submitted to international rust screening nurseries (Njoro + Debre Zeit)?